

Use what you've got, to get what you want: **small steps towards using outcomes to develop services**

Dr Paul Tabraham
East Area Psychological Services

OUR VALUES



Context

- ➔ One of four AMH psychological services
- ➔ All services use different outcome measures
- ➔ Measures recorded on Excel spreadsheets or Access databases

Aim

- Use outcome measures to compare the effectiveness of psychological interventions across:
- Areas
 - Modalities: group or individual
 - Orientations: CBT, CAT or DBT
 - Presenting problems

Objectives

- ➔ Standardise the suit of measures across areas
- ➔ Collect outcome data via the electronic patient record, RiO
- ➔ Report outcome data via business intelligence system, Tableau

Stage 1. Proof of Concept. I

➡ Use measures currently available on RiO

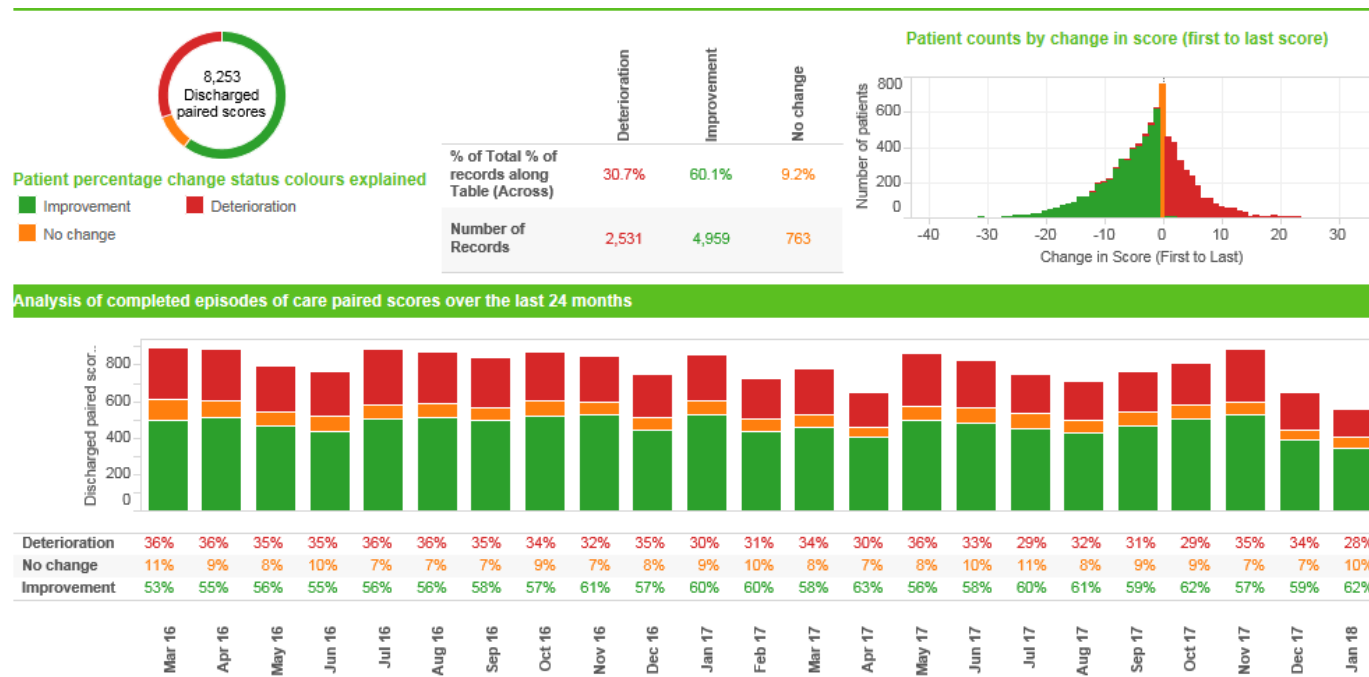
- CORE10
- GAD7
- PHQ9
- WASAS

➡ Potential to compare to IAPT outcomes

Stage 1. Proof of Concept. II

- ➔ Create a Tableau report to feed the data back to practitioners
- ➔ Develop a process to feedback performance

Tableau Report



OUR VALUES



Refining the Report

Mental Health Outcomes - Completed outcome specific dashboard

Select an outcome measure Select a period Discharge cluster Select a Division Select an Area Select a Team

(All) Last 12 months (All) (All) (All) (All)

A discharged paired score is defined as the first and last of 2 or more scores within a completed episode of care (Inpatient - Admission to Discharge, Community - Referral to Discharge or Referral allocation to Referral allocation discharge).

Improvement is where a patient's last score has improved by a score of 1 or more compared to their first. Deterioration is where a patient's last score has worsened by a score of 1 or more compared to their first. No change is where a patient's last score was the same as their first score.

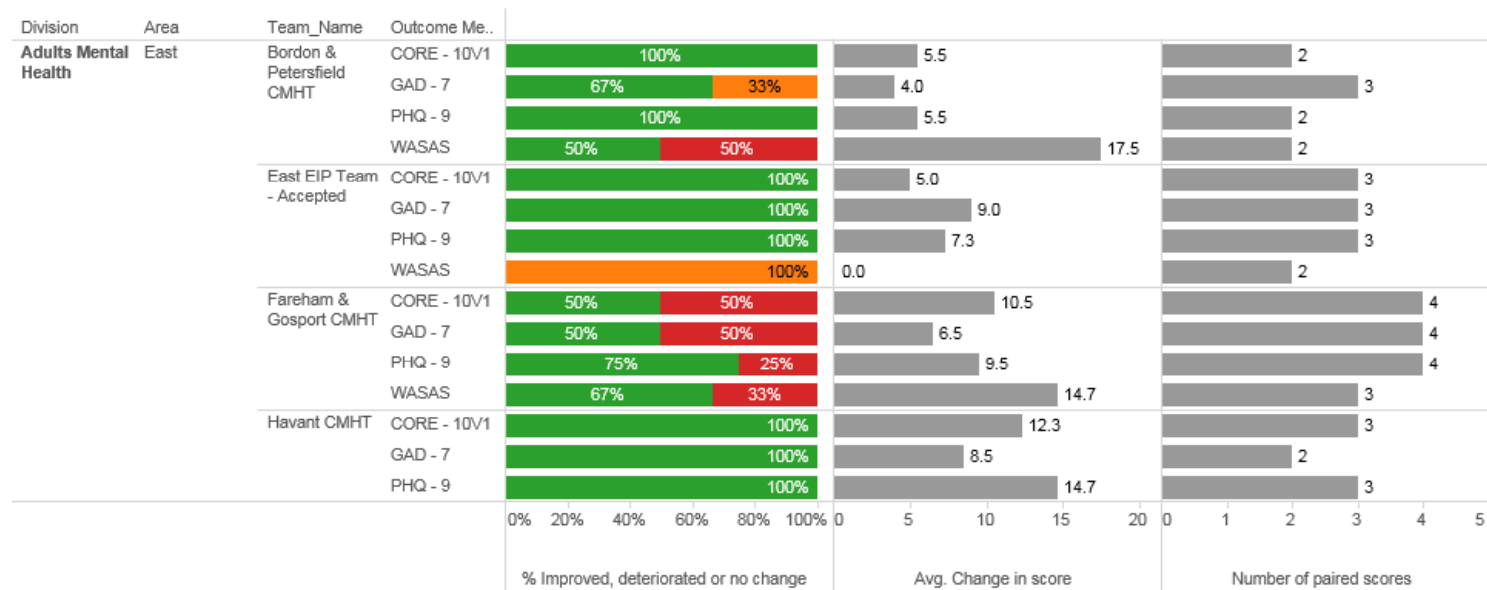
OUR VALUES



Psychology Outcomes. I

Analysis of completed episodes of care paired scores over the reporting period by Team and Outcome Measure

Click the '+/-' icon above the hierarchy columns to expand or collapse the hierarchy.



OUR VALUES



Patients & people first

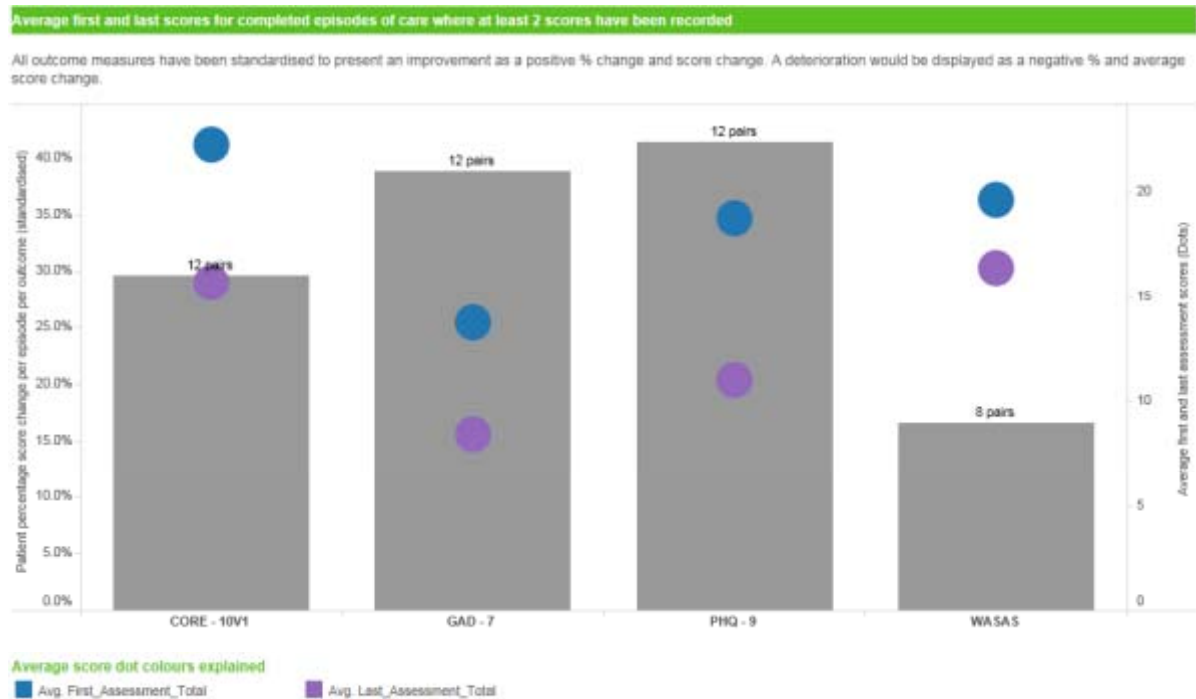


Partnership



Respect

Psychology Outcomes II



OUR VALUES



Pre but no Post

Number of completed episodes of care with only one recorded score (Click on hierarchy or outcome measure to change trend chart)

Click the '+/-' icon above the hierarchy columns to expand or collapse the hierarchy.

Division	Area	Team_Name	CORE - 10V1	GAD - 7	PHQ - 9	WASAS	Grand Total
			Single score	Single score	Single score	Single score	
		Bordon & Petersfield CMHT	3	1	3	2	9
		East EIP Team - Accepted	6	5	5	7	23
		Fareham & Gosport CMHT	7	9	9	9	34
		Havant CMHT	26	25	24	20	95
Grand Total			43	41	42	39	165

Trend analysis of number of completed episodes of care with only one recorded score over the last 24 months



OUR VALUES



Patients & people first



Partnership



Respect

Feedback to Service User

Individual assessments where 1 = first assessment

Where a patient assessment has no score presented this signifies a form has been recorded but no outcome scores have been entered. Hover over score for assessment date.

Click the '+'/- icon above the hierarchy columns to expand or collapse the hierarchy.

Number of Assessments

Division	Area	Team_Name	Patient_Id	Outcome Measure	Treatment_S...	1	2	
				PHQ - 9	13/02/13			9
			1096283	CORE - 10V1	01/10/13			8
				GAD - 7	01/10/13			7
				PHQ - 9	01/10/13			4
			1128857	CORE - 10V1	18/04/17			33
				GAD - 7	18/04/17			19
				PHQ - 9	18/04/17			26
				WASAS	18/04/17			25
			1138001	CORE - 10V1	01/11/16			33
				GAD - 7	01/11/16			21
				PHQ - 9	01/11/16			27
				WASAS	01/11/16			29
			21135848	CORE - 10V1	08/02/16			22
				GAD - 7	08/02/16			18
				PHQ - 9	08/02/16			20
				WASAS	08/02/16			31
			21164840	CORE - 10V1	05/05/17			29
				GAD - 7	05/05/17			15
				PHQ - 9	05/05/17			19

Assessment score colours explained

OUR VALUES



Improving Data Collection

- ➔ Admin process to check measures added at discharge.
- ➔ Regular feedback to therapists

Stage 2. New measures. I

- ➔ Reach consensus on desired outcome measures
- ➔ Find a way to collect these data without breaching copyright
- ➔ Create a module on RiO to collect the data without adding the forms

Stage 2. New measures. II

- Mental Health Confidence Scale (MHCS)
- Clinical Outcome Routine Evaluation (CORE-OM)
- University Rhode Island Change Assessment Scale (URICA)
- International Personality Disorder Examination (IPDE)
- Working Alliance Inventory (WAI)
- Warwick-Edinburgh Mental Wellbeing Scale (WEMWBS)
- Choice of Outcome in CBT for Psychoses (CHOICE – short form)
- Psychotic Symptom Rating Scale (Psysrats – abbreviated)
- Wessex Dissociation Scale (WDS)
- Five Facets Mindfulness Scale
- BPD Scale
- DBT Ways of Coping Checklist
- Brockington Post Partum Bonding scale

OUR VALUES



Create a results form

Outcome Measure	Score
Working Alliance Inventory (WAI)	
Warwick-Edinburgh Mental Wellbeing Scale (WEMWBS)	
Choice of Outcome in CBT for Psychoses (CHOICE – short form)	
Wessex Dissociation Scale (WDS)	

Validation

- ➡ Existing forms require validation by a clinician.
- ➡ General agreement that data can be added by an administrator in future.

Stage 3. Refine comparisons

➡ Create new independent variables to compare different interventions:

- Pathway
- Diagnosis
- Intervention

Any questions or suggestions?

OUR VALUES

